

Fish Explorer is a complex website with a lot of information, yet we try to keep it as organized as possible. To better understand our system, keep in mind that lakes and fish species are the core. Everything else is either intertwined with these or supplemental.

Getting Around

The top navigation menu will direct you to most of the main pages within the website. You can always go directly to a lake's detail page by using the lake drop-down menu at the top left in the orange box. To use the site to its fullest, sign up for a free account using the red button on the left side. When you log in as a member, you are able to view current lake conditions, submit lake updates, and write forum posts.



Top Navigation Menu

Colorado Fishing Map

The first page you want to visit on the website is the Colorado Fishing Map. The map uses Google Maps to chart all of the lakes we feature; all of the icons are color coded in regards to recent conditions for the lake. A key for the color codes is displayed at the bottom of the map.

At the top of the map are two toggle menus, one for fish species and one for boating type. If you select a type of fish from the left drop-down menu, the lakes that contain that fish will remain on the map while the others disappear. If you have a boat and want to know where you can take it, choose a type of boating in the right drop-down menu and the lake icons will change according to your selection.

If you hover your mouse over a lake icon the name will appear. Click the icon to zoom into the area. A balloon will pop up with more information about the lake, including a link that will take you to the lake's detail page. Zoom in and out using the zoom bar on the left side of the map. Toggle between map, satellite, and hybrid views by clicking the white rectangular buttons at the top right on the map.



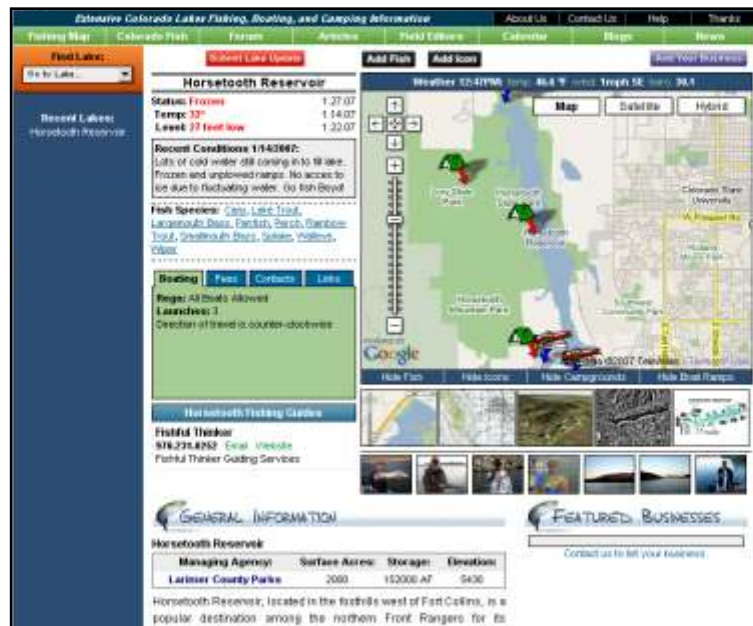
Lake Details Pages

Each lake we feature has a detail page. You may reach these pages from the Colorado Fishing Map or via the drop-down select menu at the top left of the page in orange.

The lake detail page contains a lot of information. Current conditions are listed at the top left when you are logged in. A list of fish species that reside in the lake lie just below, each hyperlinked to the fish details page. Boating information, park fees, lake contacts, and links are in the green box underneath. You may toggle between them by clicking on the appropriate blue tabs.

At the top right is a map of the lake, this time showing icons for campgrounds and boat ramps. Click these icons to find more details about them. Live weather conditions from WeatherBug are provided at the top of this map. WeatherBug has several stations throughout Colorado, and we have chosen the station nearest each lake.

The larger thumbnail images below the map allow you to toggle the map between the Google Map view, topo view, satellite view, 3D view, and a facilities map if available. These views link to more detailed maps on corresponding websites. The smaller thumbnails represent photographs pertaining to the lake. Click on these images to show the photo in the map box, then click the larger photo in the map box to get an even larger version.



Below this top-level section lies several other pieces of information including a general description of the lake, forum posts, recent blogs and articles relating to the lake, lake size, elevation when full, driving directions, managing agency, campgrounds, boat ramps, Colorado DOW fishing reports, stocking information, and more.

Fish Species

You may reach the fish species page by clicking on the "Colorado Fish" link in the top navigation menu or from a link on the lake details page. While on the fish details page, you may choose to view another fish by clicking on the list at the top of the page, or by selecting a different fish from the drop-down menu selector at the top right in the orange box.

This page displays a photo of the fish and lists the lakes that currently contain the species. You may click on any of these lakes to go directly to that lake details page.

All of the lakes we feature have been researched to include the most accurate list of healthy and catchable species in the lake. We have spent several hours researching stocking reports, sampling reports, and lake history, and have personally talked with each DOW biologist managing the fishery. To the best of our knowledge, this is the most accurate and current listing of species for these lakes available on the web.

Underneath the photo is a general description of the fish, the Colorado DOW details if provided, and any links to websites with more information on the fish. Additionally, you will find recent forum posts, blogs, and articles that pertain to the fish species selected.


Below all of this, we have stocking information for the species, listing the lakes that have been stocked with this fish in the last five years for each lake we feature and the number of fish stocked..

Colorado Fish Species

Brook Trout	Outbow Trout	Lake Trout	Pike	Spike	White Bass
Brown Trout	Outthroat Trout	Largemouth Bass	Rainbow Trout	Sucker	Wiper
Carp	Grayling	Panfish	Saugrey	Tiger Muskie	
Catfish	Kokanee	Perch	Smallmouth Bass	Walleye	

Kokanee

Go to FxR LakeMap...



[View another fish:](#)
Kokanee

FxR Lakes with Kokanee

- Big Creek Lake(Lower)
- Blue Mesa Reservoir
- Carter Lake
- Dillon Reservoir
- Eleven Mile Reservoir
- Eldon Lake
- Granby Lake
- Orand Lake
- Green Mountain Reservoir
- Grout Reservoir
- Shadow Mountain Lake
- Stegobach Reservoir
- Taylor Park Reservoir
- Vallecito Reservoir
- Williams Fork Reservoir
- Wolford Mountain Reservoir

Kokanee salmon are fast becoming a favorite fish of anglers as well as the Colorado DOW because of their ability to survive despite fluctuating water levels. Kokanee feed primarily on zooplankton and can be found in low-light conditions cruising the surface of lakes. Trolling is effective as the day wears on and summer boat traffic sends them deeper.

Qualifying length for a Colorado Master Angler Award for Kokanee is 20 inches. Colorado Released Fish Record for Kokanee is 25"

From the Colorado DOW:
Kokanee (land-locked Pacific sockeye salmon) are suited to the large, fluctuating mountain reservoirs of Colorado. These silver fish with black spots on the upper half of their bodies can be found swimming in compact schools feeding on zooplankton, a food source unaffected by the drawing down of reservoirs. They turn reddish in color and males develop a "hook jaw" during the fall spawning season. Trolling with cowbells at medium depths provides angling success. Special angling seasons are offered on some areas during spawning runs, and provide much of the catch for these delicious salmon. Kokanee die after spawning.

Most Recent Kokanee Forum Posts

- Kokanee fishing 01.24.07 by Dabot
- SHAKE RIVER INLET 12.05.06 by WE4BEL
- Snagging 11.16.06 by Lones
- kokanee 09.01.05 by gH029
- kokanee 08.22.05 by gH029

Field Editor Articles and Blogs

On the home page you will notice our Field Editors. These editors publish articles and frequent blogs that pertain to fishing in Colorado. Recent blogs and articles are listed on the home page. Click on the Field Editor of your choice and you will be taken to their home page. Each of the Field Editors' home pages has a detailed biography, list of recent blogs and articles, a photo gallery, and links to blog and article archives. Click on the archive links to view full listings of each. To view the various Field Editors, you may also click on the "Field Editor" link in the top navigation menu.


Chad LaChance - Field Editor

[Return to Field Editors Home](#)

Intro:
Chad LaChance, *The Fishin' Thinker*, is a professional fishing guide, author, and instructor based in Fort Collins, Colorado. A multi-species angler fishing both fresh and salt water, Chad is a light tackle, artificial lure specialist equally at home with fly, spin, or casting gear. He is a bass tournament winner fishing with several organizations and has been featured in the Denver Post and Colorado Fisherman. In addition to regular seminar engagements including the International Sportsman's Expo, Chad is a regular contributor on AM 950 The Fan Outdoors, has appeared on Mountain States Fishing, and is proud to be sponsored by Sportsman's Warehouse, Berkley, St. Croix, Shimano, Rod Wrap, Jewett Baitz, and Coldwell Banker.

Biography:
Chad came about his fishing addiction honestly. Growing up on the beach in Jupiter Florida, one of the premier fishing areas in the state, provided Chad with the opportunity to fish daily and from an early age, it was obvious that he was destined to life in the outdoors. Moving to Colorado as a kid opened even more outdoor adventures and that sealed the deal. Jumping forward, he is now a licensed outfitter in Colorado, where he guides on Horsetooth Reservoir and Carter Lake. Often billed as "The Fishin' Thinker" and guiding under that name (Outfitter #2414), Chad is constantly expanding his fishing company and already has a guide in the Denver Metro area. In addition to guiding, Chad is a seminar speaker, writer, photographer, and teacher of all things fishing. While he is most known as a bass fisherman, Chad is actually a light tackle artificial lure specialist for a variety of fresh and salt water fish. Species to his credit include tarpon, snook, redfish, peacock bass, grouper, shark, permit, barratuda, and just about everything that swims in Colorado. Outside of fishing, Chad loves to hunt, cook, and travel. He is married to Stephanie and is accompanied everywhere he goes by Bud, his black lab who is in charge of enthusiasm. A successful real estate career rounds out his days.

[Contact Chad](#)



Chad's Recent Articles

- [The Will to Win 1/5/2007](#)
The beginning of the new year finds many open-water fishermen anxious to get back on the water. What better way to spend that energy on preparing for the season that may come sooner than you expect.

Chad's Recent Blogs

[View archives](#)

- [Post Game Show... 2/1/2007](#)
Well, the Denver International Sportsman's Expo has come and gone. It's a big deal for people like me who are there to work, but also enjoy the same th...

You may comment on a blog by clicking on the "Write Comment" link at the bottom of any Field Editor Blog. You may also contact each Field Editor by email with our contact form by clicking on the "Contact" link below each editor's biography on their home page. Field Editors are individually sponsored by various companies, which are listed on their home page, article pages, and blog pages. Photos in the Field Editor photo gallery can be enlarged by clicking on them.

Calendar

To access the fishing events calendar, click on the “Calendar” link in the top navigation menu. Advance months by clicking on the “Next Month” link at the top right of the calendar. Move backwards by clicking on the “Prev. Month” link at the top left of the calendar. You may also choose a specific date on the calendar by clicking on the calendar icon in the middle. To see a full year of events, click on the year in the date at the top of the calendar, or the “All of [year]” links.

Events are listed in the boxes that represent days of the week. If more events are listed than can fit in the box, a scrolling bar will appear when you mouse over the day. Hover your mouse over arrows on this scrolling bar to move the events up and down.

Click on an individual event to get a pop-up window with event details. You will need to enable pop-up windows in your browser or firewall settings for this to work.

To submit an event for inclusion on this calendar, click on the “Submit an Event” button above the calendar. Fill out the form as completely as possible and click “Save”. We will review the event and add it to the calendar if appropriate.

Colorado Fishing Events Calendar						
February 2007		March 2007		All of 2007		All of 2008
← Prev. Month		February 2007			Next Month →	
Sunday	Monday	Tuesday	Wednesday	Thursday	Friday	Saturday
				1 Colostado Ice Fishing with Dave Bryant	2	3 SOUTH PARK ICE MASTERS
4 Fly Fishing Tailrace Waters	5	6	7	8 Ice Fishing - Sportsmans Warehouse	9	10 Ice Fishing Clinics for Women DeJaney Lakes Trophy Ice Fishing Contest
11 Fly Fishing Tailrace Waters	12	13 Mukie Ice Meeting	14	15	16	17 10th Annual Wolford Mtn. Ice Fishing Contest ICE FISHING SEMINAR
18	19	20	21	22	23 Bass Pro Fly Fishing Weekend	24 Bass Pro Fly Fishing Weekend
25 Bass Pro Fly Fishing Weekend	26 President's Day	27	28			

News

Fish Explorer publishes news related to fishing and lakes in Colorado. The most recent news articles are displayed at the top of the home page in a scrolling box. To access the news archive, click on the “More news...” link below this box, or click on the “News” link in the top navigation menu. On the main news page we have Fish Explorer news articles as well as RSS feeds from various sources that may interest Colorado fishermen. At the top of this page is a link for “See all news...” that will take you to the Fish Explorer news archive.

Fish Explorer Forum

To access the forum, click on the “Forum” link in the top navigation menu or on any link found on the recent forum posts boxes on the main page, lake detail pages, and fish species pages.

To post a new forum topic or reply to an existing post, you need to register for a free account. You may view all posts regardless. To start a new forum post, click on the “New Post” button at the top of the forum page. To reply to a post, click on the “Reply” button on any post details page.

Forum posts are categorized by lake and by fish species. To see all forum posts regarding a specific lake, select the lake from the drop-down menu at the top. Do the same for a specific fish species using the “Select a Fish Forum” drop-down menu. If the menus are not working, check to make sure you have Javascript enabled in your browser.

Lake Condition Updates

At the core of Fish Explorer is the ability for fishermen to participate in the updating of lake conditions, most notably water temperatures, water levels, and other pertinent details pertaining to access. Users must be logged in to submit a lake conditions update.

“Submit Conditions Update” buttons can be found on each page at the top of the screen, on the home page, and on each individual lake details page. Click on one of these buttons to access the conditions update form. Instructions and suggestions for updates are listed on this form. Select the lake you wish to update, fill out the form with any information you have, and click “Submit”. Your update will be sent to us for review and approval. Once approved, your updates will appear to logged-in members on the chosen lake at the top of the page.

Lake Conditions Update Form

This form will submit lake conditions to us. We will review it prior to posting. If we use your report, you will be credited on the lake details page.

Simply fill out the form below and click on the help links for additional information about the data. If you're missing data for any of the fields, leave them blank.

Lake:

Date:

Water Temperature: (in degrees Fahrenheit) (help)

Water Level: (can be non-numeric) (help)

Other Notable Conditions:

Expand on any information you need to explain the items above, or enter pertinent current information that will effect lake-goers. Please enter dates if it is time-sensitive information.

Ice Conditions
The following information will be very helpful:

- Ice thickness (with location of measurement)
- Color of the ice (e.g. - clear, or white)
- Snow cover on the ice
- Conditions of access to lake (roads, trails, etc.)

(Please refrain from saying the ice is "safe")